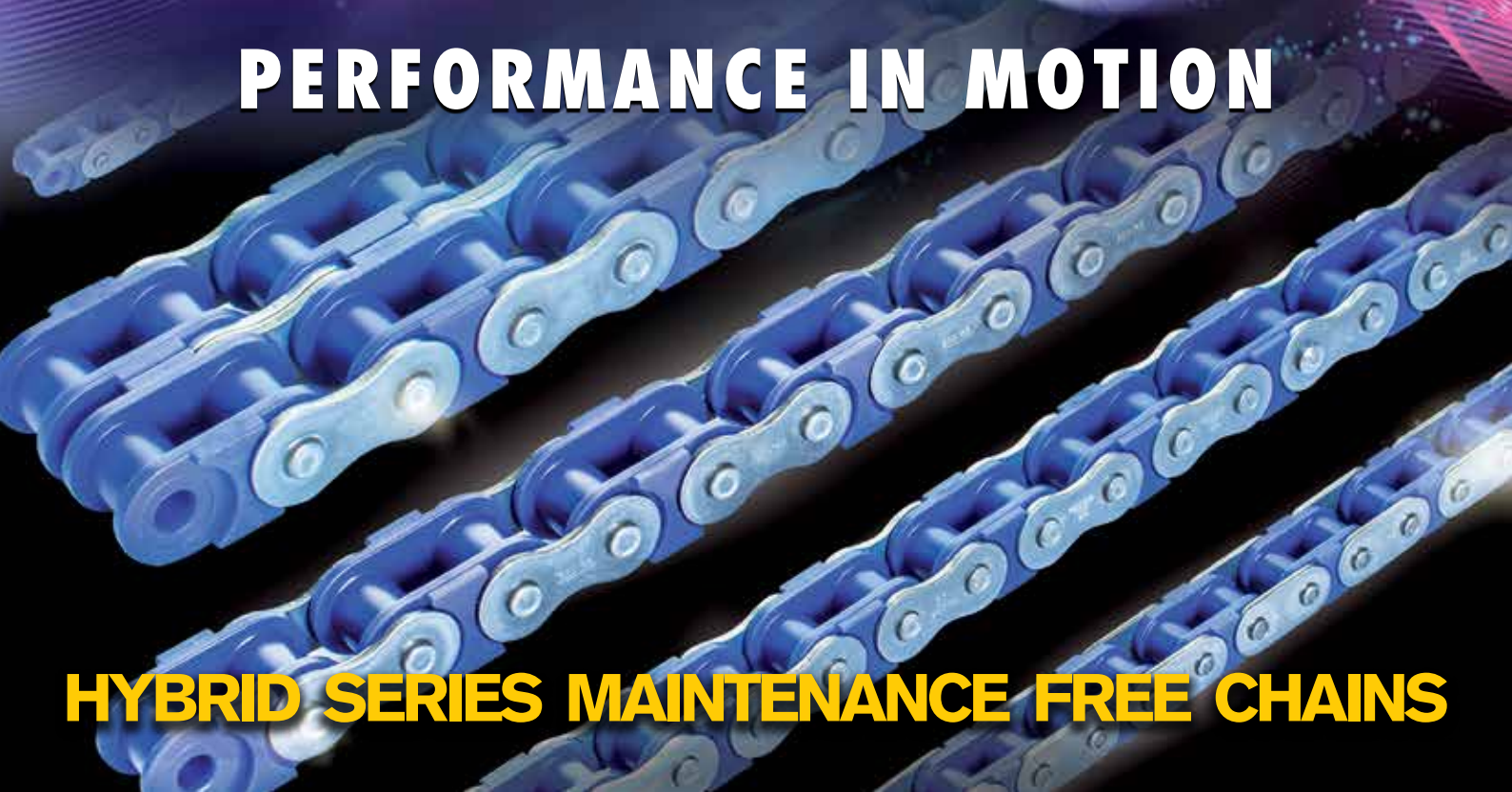




**PERFORMANCE IN MOTION**



**HYBRID SERIES MAINTENANCE FREE CHAINS**

# Regina HYBRID series chains.

Regina HYBRID series chains, the perfect combination of stainless steel and polyacetal resin.

The new HYBRID series chains combine Regina's longstanding experience and technology in steel and plastic materials. By merging stainless steel strength and performance together with the low-friction properties of polyacetal resin, Regina HYBRID series chains provide for lube-free, clean operation in corrosive, wet and highly demanding hygienic environments.

## BENEFITS

### ■ Lube free

- Maintenance free
- Clean operation avoids product contamination

### ■ Corrosion resistant

### ■ Lightweight

- 50% lighter than steel chain
- Low noise

### ■ Suitable for food applications

- Food grade materials
- Highly cleanable
- Blue color

### ■ Cost competitive

- Long lasting
- Lower cost of operation vs. stainless steel chain

## CHAIN CONSTRUCTION

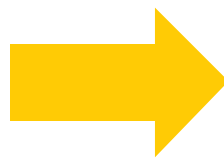
| COMPONENT   | MATERIAL                   |
|-------------|----------------------------|
| OUTER PLATE | AUSTENITIC STAINLESS STEEL |
| PIN         | AUSTENITIC STAINLESS STEEL |
| INNER LINK  | POLYACETAL RESIN           |



## FIELDS OF APPLICATION

Regina HYBRID series chains provide the best **ADDED VALUE** in:

- Sterile or hygienic environments
- Corrosive environments
- Wet environments
- Long lasting, no lube, low chain pull applications



Main fields of application:

- Food
- Packaging
- Pharmaceutical
- Electronics
- Paper and cardboard
- Medical

## APPLICATION LIMITS

- MAXIMUM SPEED: **1 m/s**
- MAXIMUM SPECIFIC PRESSURE: **8 N/mm<sup>2</sup>**
- OPERATING TEMPERATURE RANGE: **-40°C ÷ +80°C**
- NOT SUITABLE FOR STRONG ACIDIC ENVIRONMENTS

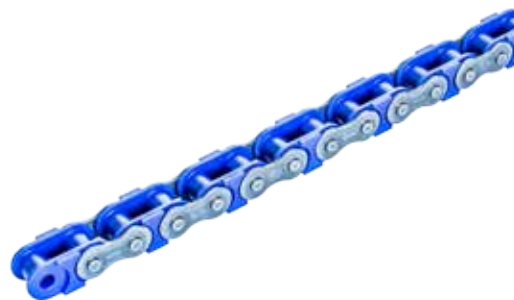
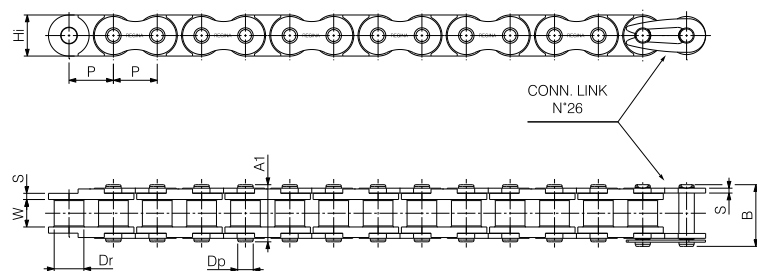
If your application exceeds the limits, or if you foresee the use of both the max speed and max allowable load, please contact Regina Technical Service



Regina HYBRID chains, as well as all other Regina products, are manufactured exclusively in Regina's European Factories

## PRODUCT RANGE

### SINGLE STRAND



| Regina | Iso | Pitch P |        | Roller Diam. Dr | Inside Width W | Plate High Hi | Plate Thickness S | Pin Diam. Dp | Pin Width A1 | Max Width B | Working Surface | Suggested Working Load (max) | Std. loose parts | Comm. Link | Offset Link |
|--------|-----|---------|--------|-----------------|----------------|---------------|-------------------|--------------|--------------|-------------|-----------------|------------------------------|------------------|------------|-------------|
| ref    | ref | mm      | inches | mm              | mm             | mm            | mm                | mm           | mm           | mm          | mm <sup>2</sup> | N                            |                  |            |             |

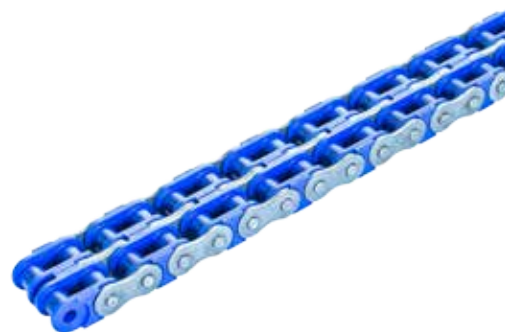
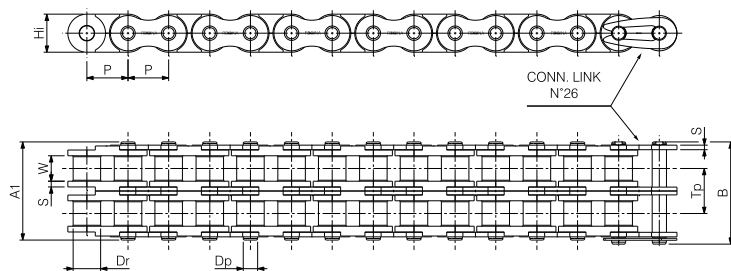
#### EUROPEAN SERIES

|          |       |        |      |       |      |       |           |      |       |       |    |     |    |  |     |
|----------|-------|--------|------|-------|------|-------|-----------|------|-------|-------|----|-----|----|--|-----|
| SSC126BP | 06B-1 | 9,525  | 3/8  | 6,35  | 5,72 | 8,26  | 1,27/1,03 | 3,28 | 12,80 | 19,00 | 28 | 224 | 26 |  | n/a |
| SS126BP  | 08B-1 | 12,7   | 1/2" | 8,51  | 7,75 | 11,81 | 1,63/1,40 | 4,45 | 16,50 | 24,00 | 50 | 400 | 26 |  | n/a |
| SS136BP  | 10B-1 | 15,875 | 5/8" | 10,16 | 9,65 | 14,73 | 1,63/1,53 | 5,08 | 19,10 | 27,00 | 69 | 552 | 26 |  | n/a |

#### AMERICAN SERIES

|         |       |        |      |       |     |       |      |      |       |       |    |     |    |  |     |
|---------|-------|--------|------|-------|-----|-------|------|------|-------|-------|----|-----|----|--|-----|
| SSA50BP | 10A-1 | 15,875 | 5/8" | 10,16 | 9,4 | 15,09 | 2,00 | 5,09 | 20,50 | 28,00 | 70 | 560 | 26 |  | n/a |
|---------|-------|--------|------|-------|-----|-------|------|------|-------|-------|----|-----|----|--|-----|

### DOUBLE STRAND



| Regina | Iso | Pitch P |        | Roller Diam. Dr | Inside Width W | Plate High Hi | Plate Thickness S | Pin Diam. Dp | Pin Width A1 | Max Width B | Working Surface | Suggested Working Load (max) | Std. loose parts | Comm. Link | Offset Link | Trasversal Pitch Tp |
|--------|-----|---------|--------|-----------------|----------------|---------------|-------------------|--------------|--------------|-------------|-----------------|------------------------------|------------------|------------|-------------|---------------------|
| ref    | ref | mm      | inches | mm              | mm             | mm            | mm                | mm           | mm           | mm          | mm <sup>2</sup> | N                            |                  |            |             | mm                  |

#### EUROPEAN SERIES

|          |       |        |      |       |      |       |           |      |       |       |     |       |    |     |  |       |
|----------|-------|--------|------|-------|------|-------|-----------|------|-------|-------|-----|-------|----|-----|--|-------|
| SSC221BP | 06B-2 | 9,525  | 3/8  | 6,35  | 5,72 | 8,26  | 1,27/1,03 | 3,28 | 22,90 | 29,50 | 56  | 448   | 26 | n/a |  | 10,24 |
| SS226BP  | 08B-2 | 12,7   | 1/2" | 8,51  | 7,75 | 11,81 | 1,63/1,40 | 4,45 | 30,40 | 38,20 | 100 | 800   | 26 | n/a |  | 13,92 |
| SS236BP  | 10B-2 | 15,875 | 5/8" | 10,16 | 9,65 | 14,73 | 1,63/1,53 | 5,08 | 35,80 | 44,00 | 138 | 1.104 | 26 | n/a |  | 16,59 |

#### AMERICAN SERIES

|           |       |        |      |       |     |       |      |      |       |       |     |       |    |    |  |       |
|-----------|-------|--------|------|-------|-----|-------|------|------|-------|-------|-----|-------|----|----|--|-------|
| SSA50BP-2 | 10A-2 | 15,875 | 5/8" | 10,16 | 9,4 | 15,09 | 2,00 | 5,09 | 38,40 | 46,60 | 140 | 1.120 | 26 | 26 |  | 18,11 |
|-----------|-------|--------|------|-------|-----|-------|------|------|-------|-------|-----|-------|----|----|--|-------|

### IMPORTANT INFORMATION

- HYBRID series chains comply dimensionally with ISO specifications and engage with the same sprockets used for standard ISO chains
- HYBRID series chains have a fixed roller construction
- HYBRID series chains can be equipped with extended pins and most of the outer link attachments utilised for standard chains (consult Regina Technical Service for availability)
- Offset links are not available for HYBRID series chains, so we recommend the use of an even number of links
- When using HYBRID series chains to support heavy products in a conveyor application, please make sure that the chain is sliding on the bottom side of the plates and not on the roller area
- When cutting Regina HYBRID series chains, please use caution since breakage of the plastic may occur if the inner link is not properly clamped by the chain breaker



## PERFORMANCE IN MOTION

### ITALY

REGINA CATENE CALIBRATE S.p.A.  
HEAD OFFICE:  
Via Monza, 90  
23870 Cernusco Lombardone (LC) - Italy  
Tel. +39 039 99801  
Fax +39 039 9905229  
sales@reginachain.net

### USA

REGINA USA, INC.  
305 E. Mahn Court  
Oak Creek, WI 53154 - USA  
Tel. 001 414 5710032  
Fax 001 414 5710225  
sales.us@reginachain.net

### FRANCE

REGINA INDUSTRIE s.a.r.l.  
Z.A.C. des Chatelliers  
34 Rue des Frères Lumière  
45800 Saint Jean De Braye - France  
Tel. +33 238 836363  
Fax +33 238 836413  
sales.fr@reginachain.net

### MEXICO

REGINA de MEXICO S.A. de C.V.  
Av. Aviación 5051-28  
Col. San Juan de Ocotan  
45019 Zapopan, Jalisco - Mexico  
Tel. +52 33 3627 4043  
Fax +52 33 3627 3930  
sales.mx@reginachain.net

### CHINA

REGINA TIANJIN CHAIN & BELT CO., LTD.  
Xi Qing Economic Development Area,  
Xiang Rui Road n. 17  
Tian Xiang Industrial Zone  
300385 Tian Jin - China  
Tel. +86 22 83961223  
Fax +86 22 83961202  
sales.cn@reginachain.net

### UNITED KINGDOM

REGINA INTERNATIONAL LIMITED  
Unit 1, Dyneley Road,  
Greenbank Business Park  
Whitebirk, Blackburn,  
Lancs BB1 3AB - United Kingdom  
Tel. +44 1254 661116  
Fax +44 1254 59456  
sales.uk@reginachain.net

### ARGENTINA

REGINA INTERNATIONAL S.A.  
Diagonal 190,  
1788-1655 José Leon Suarez  
Prov. Buenos Aires - Argentina  
Tel. +54 11 47296667  
Fax +54 11 47203210  
sales.ar@reginachain.net

### GERMANY

REGINA  
Tel. +49 2662939196  
Fax +49 2662939198  
sales.de@reginachain.net

### SPAIN

CADENAS REGINA ESPAÑA, S.L.  
Calle Industria, 37  
08120 La Llagosta - Barcelona - España  
Tel. +34 93 5742838  
Fax +34 93 5740735  
sales.es@reginachain.net

### THE NETHERLANDS

REGINA  
Tel. +31 610681114  
sales.nl@reginachain.net